



# Clever Security Company (CSC)

2008 - 2021

Providing Network Connectivity and IT solutions to Government and Private sectors





# CONTENTS

## OVERVIEW

CLEVER Overview  
CLEVER Mission & Vision  
CLEVER Value

## WHY CLEVER?

Small Company  
Staff and Expertise  
Focus Area of Expertise

## TECHNICAL CAPABILITIES

Networking & Security  
Technical Services

## CONSULTANCY

IT Consultancy services  
Special services

## METHODOLOGY

Value Chain Approach  
Organizational Structure

## CLEVER CUSTOMERS

CLEVER Partners  
Contact Information  
CLEVER  
Technologies



# OVERVIEW

## CLEVER OVERVIEW

Based in Riyadh, CLEVER SECURITY was established in 2008 to provide Network Connectivity and IT solutions to government and private sectors, So far, CLEVER has implemented more than 30,000 UTP Nodes, optical fibre connectors, and telecom passive and active components. Since its creation CLEVER SECURITY has been continuously expanding its portfolio of expertise, based on market evaluation, strategic analysis and consultation with its key stakeholders. CLEVER SECURITY identifies the region's vertical market needs and establishes the adequate technical and business competencies.

## CLEVER MISSION & VISION

- Our mission is connecting people and organizations overall the Kingdom in more innovative, simple, and reliable manners than any other rival in IT Saudi market.
- Our vision is getting a persistent Networking with more affordable, powerful, and simpler connectivity and more available to all Kingdom wide

## CLEVER VALUE

- Solutions and Excellence: We expect ourselves to over exceed customers expectations
- Progressive: We stay at the leading edge
- Caring: We care about our customers, partners, employees and the communities we do business
- Passionate: Our staffs love what they do
- Ownership: We employ people that want to be in charge.



# WHY CLEVER?

## Our Company

- Highly flexible.
- Faster decisions.
- Seamless integration into customer team.
- Fast access to top personal.
- Presence Over all the Kingdom.

## Focus Area of Expertise

- Network cabling, Access points, Cabinet.
- Technical Services.
- Consultancy Services.
- Special services.
- Tools and processes.
- IT best practices.

## Staff and Expertise

- Top projects on time delivery.
- Highly professional motivated staff, 5-15 years experienced.
- Certified Cabling Designer, Certified Expert Cabling Teams.
- Networking. connectivity, IT consultancy services, IP technologies.
- Large scale Networks, infrastructure, IJTP and Optical networks.
- Audio and video systems and equipment theatres
- Top customers, High profile project.
- IT consultancy services. ITIL, COBIT, and Best practices.
- Expertise on both enterprise and Telco.
- Presence overall the Kingdom.



# TECHNICAL CAPABILITIES

## Networking & Security

- Installation, Configuration, Operations and Support of IT infrastructure including switches, routers, servers, desktops, and cabling
- Security System (CCTV, Access Door, Access Point, Fire System)
- Network Migrations and Upgrades
- Performance Analysis, Installation, and Maintenance
- Wired and Wireless System Design
- Virtual Private Networks (VPN)
- Security Analysis and Firewall Installations
- Broadband/ internet Installation Cabling
- Professional cabling installations, fully documented and thoroughly tested
- Voice and Data Infrastructure Cabling - Passive and active cabling components
- Cat 6, Cat 6A, optical fiber and optical connectors
- Audio and Video Cabling
- Customized cabling for distributing video and audio signaling.

## Technical Services

- Certified Cabling Designer.
- Certified Expert Cabling Teams.
- Hands on Engineers & Consultants.
- Certified Installer UTP & Fibre expert. - Sign Fluke Testing Machine.
- Preparing Documentation based on partner requirement - Issuing Site Certification.
- Re-arrange cables in production network.
- Audit existing cabling work.



# CONSULTANCY

## IT Consultancy services

- 5 to 15 years of industry experience.
- IT Service management Consultants.
- Usually former Employees of international telecom operators.
- Engineering or University degree in.
  - Telecommunications.
  - Computer Science and IT or related subjects.
- Highly developed technical & interpersonal skills.
- Easy to integrate within customer team.
- Multilingual (English + Arabic)

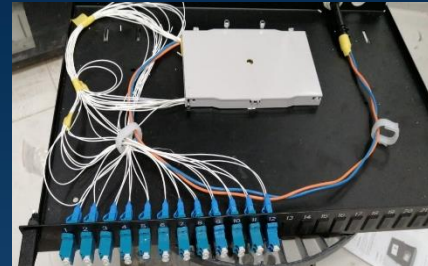
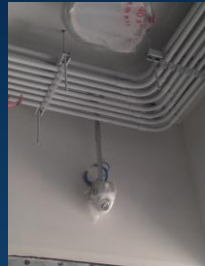


## Special services

- IT Service Managements (ITIL).
- Best Practices and standards.
- IT infrastructure change managements.
- Service Level Management.
- Auditing / Quality Assurance.
- Network Operation Canter.
- Development of RFP for the O&M.
- Evaluation of Proposals.
- Procurement Management.
- Vendor Management.
- Project/Program Management Services.
- Project Management Standard.
- Outsourcing management.
- Vendor management.



# CLEVER TEAM AND PROJECTS



# Some of CLEVER Clients





# CLEVER PARTENARS

PRO  LAB

 AirLive®

 **AXIS**®  
COMMUNICATIONS

 **NITGEN**  
biometric solutions

 **AUDAC**

 **BOSE**

 **HIKVISION**  
• Authorised Distributor

 **SECURE  
STORY**

 **Tiandy**

 **3M**

# CLEVER Certificates

